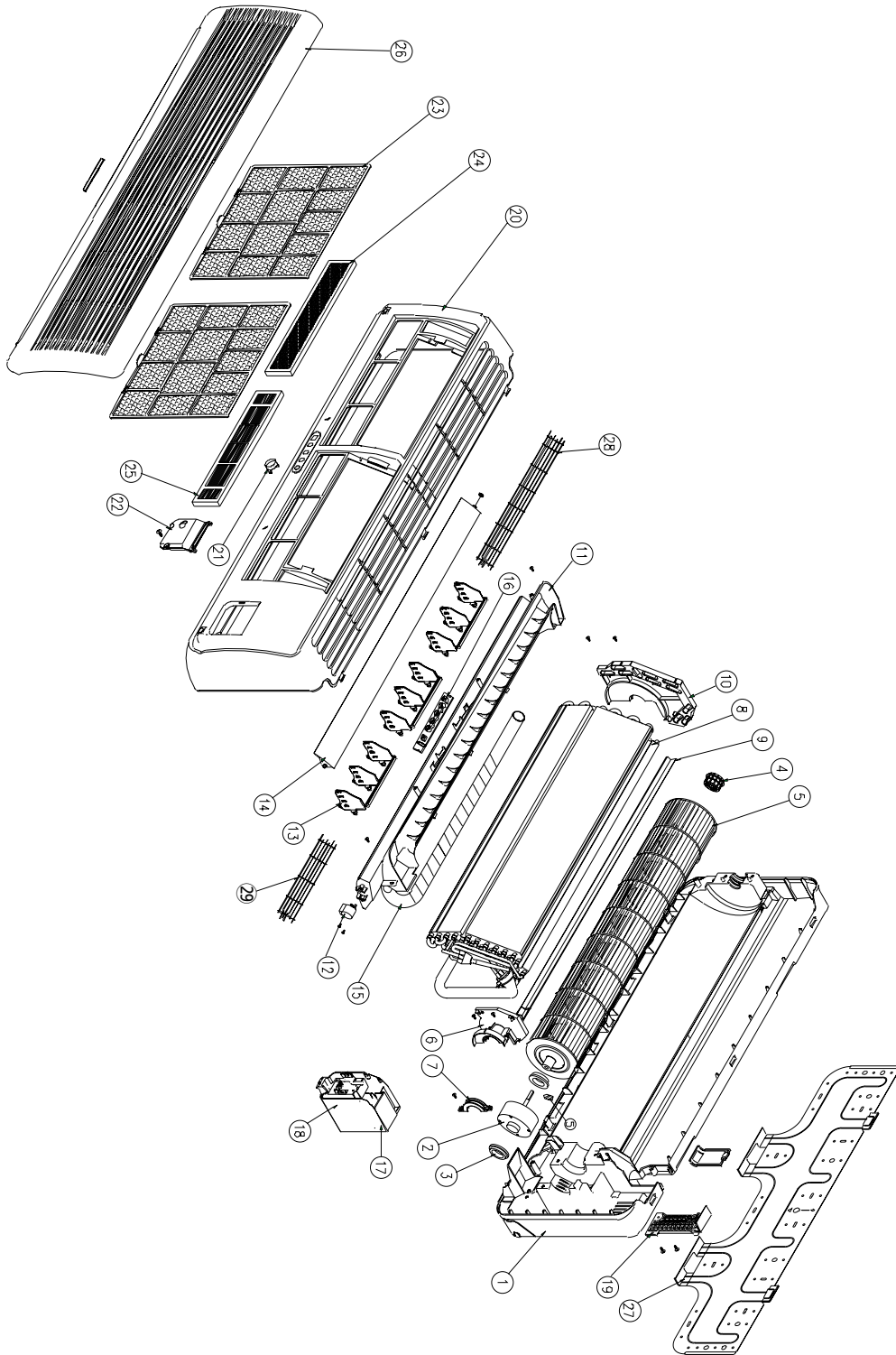


10. EXPLODED VIEW AND PART LIST

1 INDOOR UNIT

◆TAS-12H

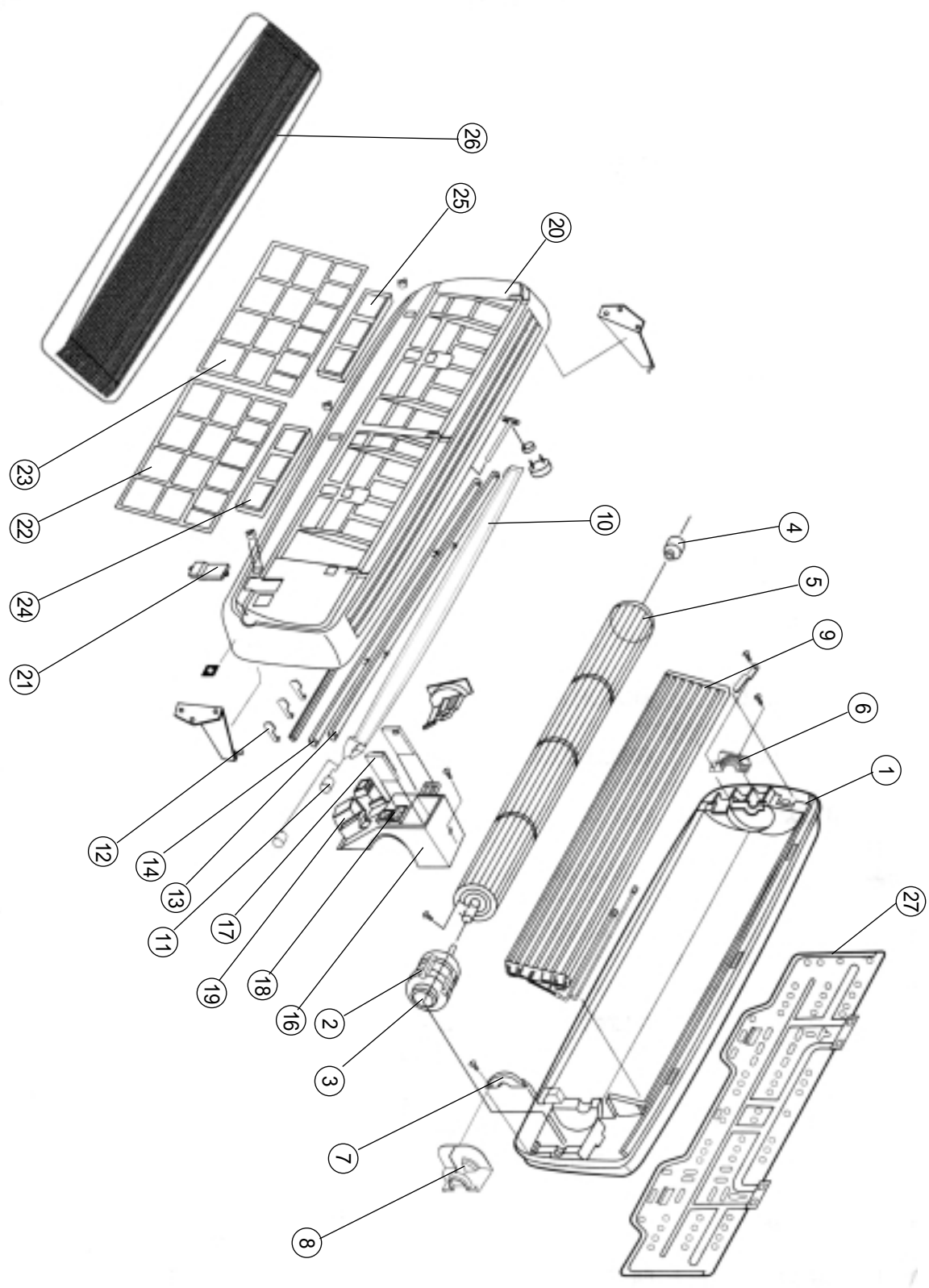


◆Indoor Unit Part List (TAS-12H)

✓ **Caution** : In this Manual, some parts can be changed for improving, their performance without notice in the parts list. So, if you need the latest parts information, please refer to PPL(Parts Price List) in Service Information Center (<http://svc.dwe.co.kr>).

No	PART CODE	PART NAME	Q'TY	SPEC	REMARK
1	3110058500	BODY Ass`y	1	HIPS T2.0 (GY258A)	
2	3118008200	MOTOR IDU	1	FDA3530DWA	
3	3111503800	CUSHION MOTOR	2	CR	
4	3106400400	BEARING PLASTIC Ass`y	1		
5	3110046000	CFF Ass`y	1	SAN+G.F.30% •100.0xL615	
6	3113000400	HOLDER MOTOR L	1	HIPS T2.0	
7	3113000500	HOLDER MOTOR R	1	HIPS T2.0	
8	3110054100	EVAPORATOR Ass`y	1	3R-3C (FP=1.5)	
9	3112500900	GUIDE EVAP.	1	PVC	
10	3114503300	PLATE EVAP. L	1	PP T2.0(GY176A)	
11	3110059500	PAN DRAIN Ass`y	1	HIPS T2.0 (GY258A)	
12	3108003910	MOTOR STEPPING	1	MP24GA	
13	3116501001	BLADE VERTICAL	3	P.P. T1.5 (GY176A)	
14	3117600101	FLAP	1	HIPS T2.5 (GY171A)	
15	3103210010	DRAIN HOSE Ass'y	1		
16	3104301700	LED PCB Ass'y	1		
17	3110063620	CONTROL BOX Ass`y	1	HIPS(T2.0 BLACK)	
18	3114208610	CONTROL PCB Ass'y	1		
19	3110400200	BODY TOP	1	HIPS T2.0	
20	3110063700	FRAME GRILLE Ass`y	1	HIPS T2.5	
21	3103401400	KNOB SWITCH	1		
22	3111403400	COVER T/BLOCK	1	HIPS T2.0	
23	3111901400	FILTER FRAME	2	P.P. T2.0 (BLACK)	
24	3101902510	FILTER CARBON Ass`y	1	BLACK	
25	3101902610	FILTER ELECTRO Ass`y	1	WHITE	
26	3110063800	INSERT GRILLE Ass`y	1	HIPS T2.5 (GY171A)	
27	3114503800	PLATE MOUNTING	1	SGCC	
28	3112501410	GUIDE SAFETY - A	1	SUS 304 ø1.5	
29	3112501420	GUIDE SAFETY - B	1	SUS 304 ø1.5	

◆TAS-15H

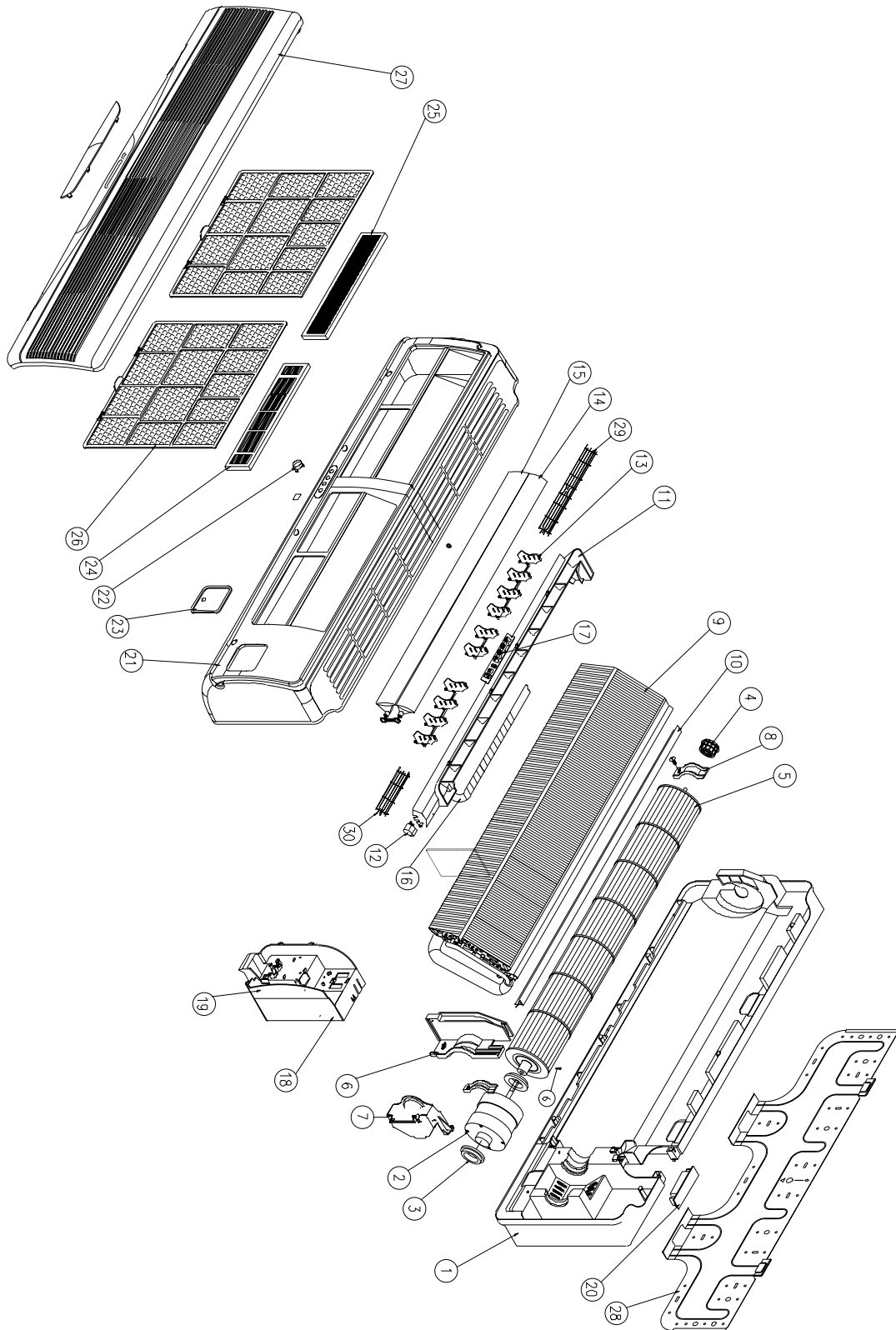


◆Indoor Unit Part List (TAS-15H)

✓ **Caution** : In this Manual, some parts can be changed for improving, their performance without notice in the parts list. So, if you need the latest parts information, please refer to PPL(Parts Price List) in Service Information Center (<http://svc.dwe.co.kr>).

No	PART CODE	PART NAME	Q'TY	SPEC	REMARK
1	3100410000	BODY Ass`y	1	HIPS (GY177A)	
2	3118008210	MOTOR IDU	1	FDA3530DWB	
3	3111503800	CUSHION MOTOR	2	CR	
4	3106400100	BEARING PLASTIC	1	RUBBER I.D.ø6.0	
5	3101800200	CFF Ass`y	1	O.D.ø102xL861	
6	3103000700	HOLDER BEARING	1	ABS (BLK)	
7	3103000600	HOLDER MOTOR L	1	ABS (BLK)	
8	3110606600	BRACKET MOTOR	1	HIPS	
9	3107400010	EVAPORATOR Ass`y	1	Fp=1.4	
10	3108120020	PAN DRAIN Ass`y	1	HIPS (GY171A)	
11	3108004300	STEPPING MOTOR	2	DC12V 400mm	
12	3106500401	BLADE VERTICAL	16	PP (GY171A)	
13	3107600100	FLAP TOP	1	ABS (GY171A)	
14	3107600200	FLAP UNDER	1	ABS (GY171A)	
15	3103210010	DRAIN HOSE Ass`y	1	P.P. + INSULATOR	
16	3100005270	CONTROL BOX Ass`y	1		
17	3114308700	CONTROL PCB Ass'y	1		
18	3104300301	SWITCH PCB Ass'y	1		
19	3104300401	LED PCB Ass'y	1		
20	3102210020	FRAME GRILLE Ass`y	1	ABS (GY171A)	
21	3101403700	COVER T/BLOCK	1	ABS (GY171A)	
22	310191000C	FILTER PRE R Ass'y	1	P.P. BLACK	
23	310192000C	FILTER PRE L Ass'y	1	P.P. BLACK	
24	3101930000	FILTER ELECTRO Ass`y	1	WHITE	
25	3101940000	FILTER CARBON Ass`y	1	BLACK	
26	3110017600	INSERT GRILLE Ass`y	1	HIPS (GY171A)	
27	3104500300	PLATE MOUNTING	1	SGCC T0.8	
28	3106300500	BAR DRAIN	2	SUS 304 ø1.5	
29	3100601400	BRACKET DRAIN	1	SUS 304 T1.0	

◆TAS-18, 24H



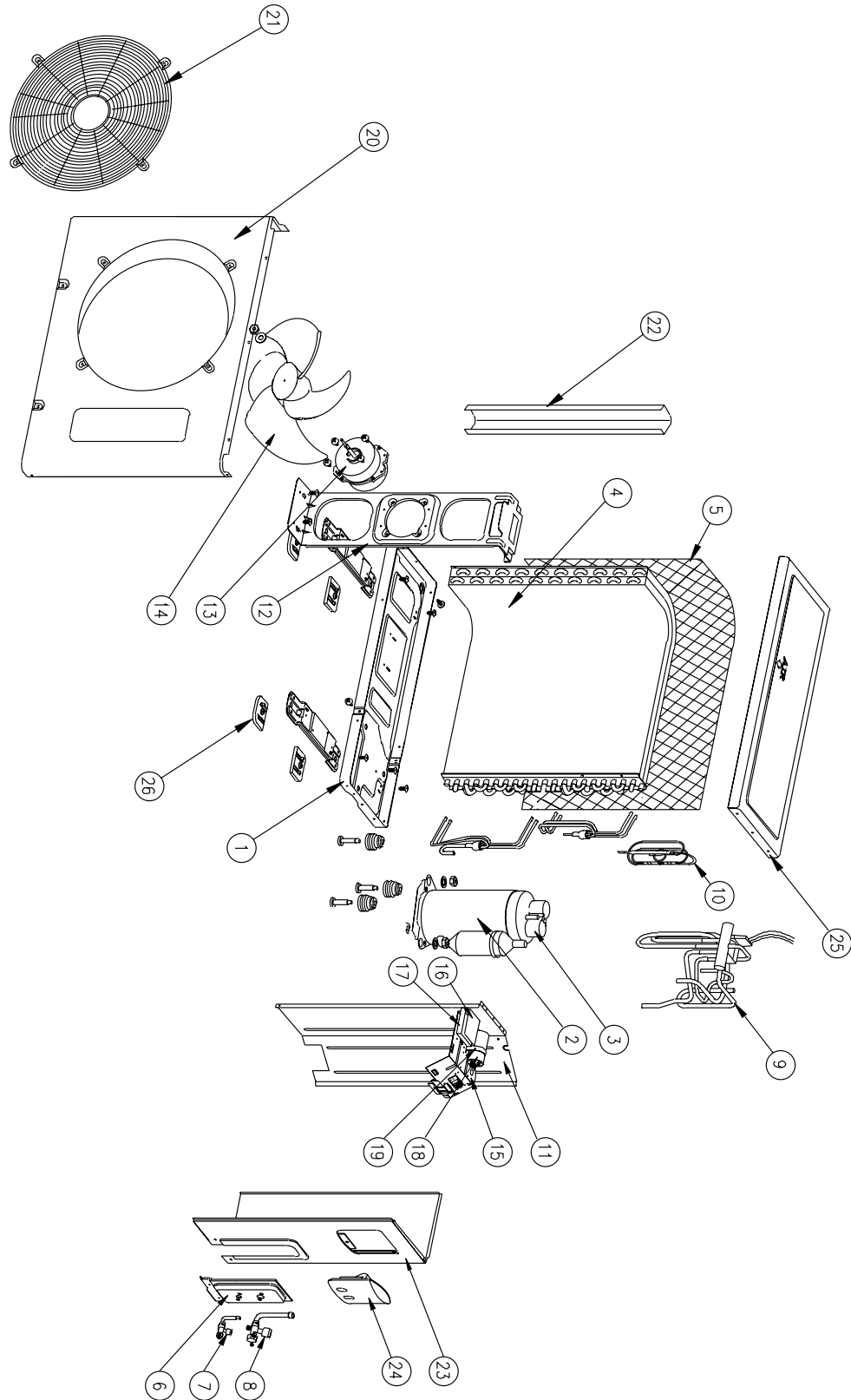
◆Indoor Unit Part List (TAS-18,24H)

✓ **Caution** : In this Manual, some parts can be changed for improving, their performance without notice in the parts list. So, if you need the latest parts information, please refer to PPL(Parts Price List) in Service Information Center (<http://svc.dwe.co.kr>).

No	PART CODE	PART NAME	Q'TY	SPEC	REMARK
1	3100076200	BODY Ass`y	1	HIPS T2.5	
2	3108008220	MOTOR IDU	1	FDA3530DWC	
3	3111503800	CUSHION MOTOR	2	CR	
4	3106400200	BEARING PLASTIC Ass`y	1	O.D.ø37.0xI.D.ø6.0	
5	3100076400	CFF Ass`y	1	O.D.ø100xL864	
6	3103003800	HOLDER MOTOR L/B	1		
7	3110606700	BRACKET MOTOR	1	HIPS T2.0	
8	3103004000	HOLDER BEARING	1	ABS T2.5	
9	311009AC11	EVAP. Ass`y	1	Fp=1.4 , 2R-5C	TAS-18H
	311009AC01			Fp=1.4 , 2R-5C	TAS-24H
10	3102501400	GUIDE EVAP.	1		
11	3100076810	PAN DRAIN Ass`y	1	HIPS T2.0 (GY258A)	
12	3108007600	MOTOR STEPPING	1	GSP-24RW-062	
13	3106502700	BLADE VERTICAL M	2.5	P.P. T1.5	
14	3107600500	FLAP UP	1		
15	3107600600	FLAP DOWN	1		
16	3103200800	DRAIN HOSE Ass`y	1		
17	3104301700	LED PCB Ass`y	1		
18	3100077060	CONTROL BOX Ass`y	1	P.P. + Talk 20%	
19	3104308800	CONTROL PCB Ass`y	1		
20	3100400700	BODY TOP	1		
21	3100077150	FRAME GRILLE Ass`y	1		
22	3103401400	KNOB SWITCH	1		
23	3101406820	COVER T/BLOCK	1	ABS	
24	3100094400	FILTER ELECTRO Ass`y	1	WHITE	
25	3100094300	FILTER CARBON Ass`y	1	BLACK	
26	3102201500	FILTER FRAME	2		
27	3100077200	INSERT GRILLE Ass`y	1		
28	3104511800	PLATE MOUNTING	1	SGCC T0.7	
29	3112501510	GUIDE SAFETY - C	1	SUS304 ø1.5 (Black)	
30	3112501520	GUIDE SAFETY - D	2	SUS304 ø1.5 (Black)	

2 OUTDOOR UNIT

◆TAS-12, 15, 18HO

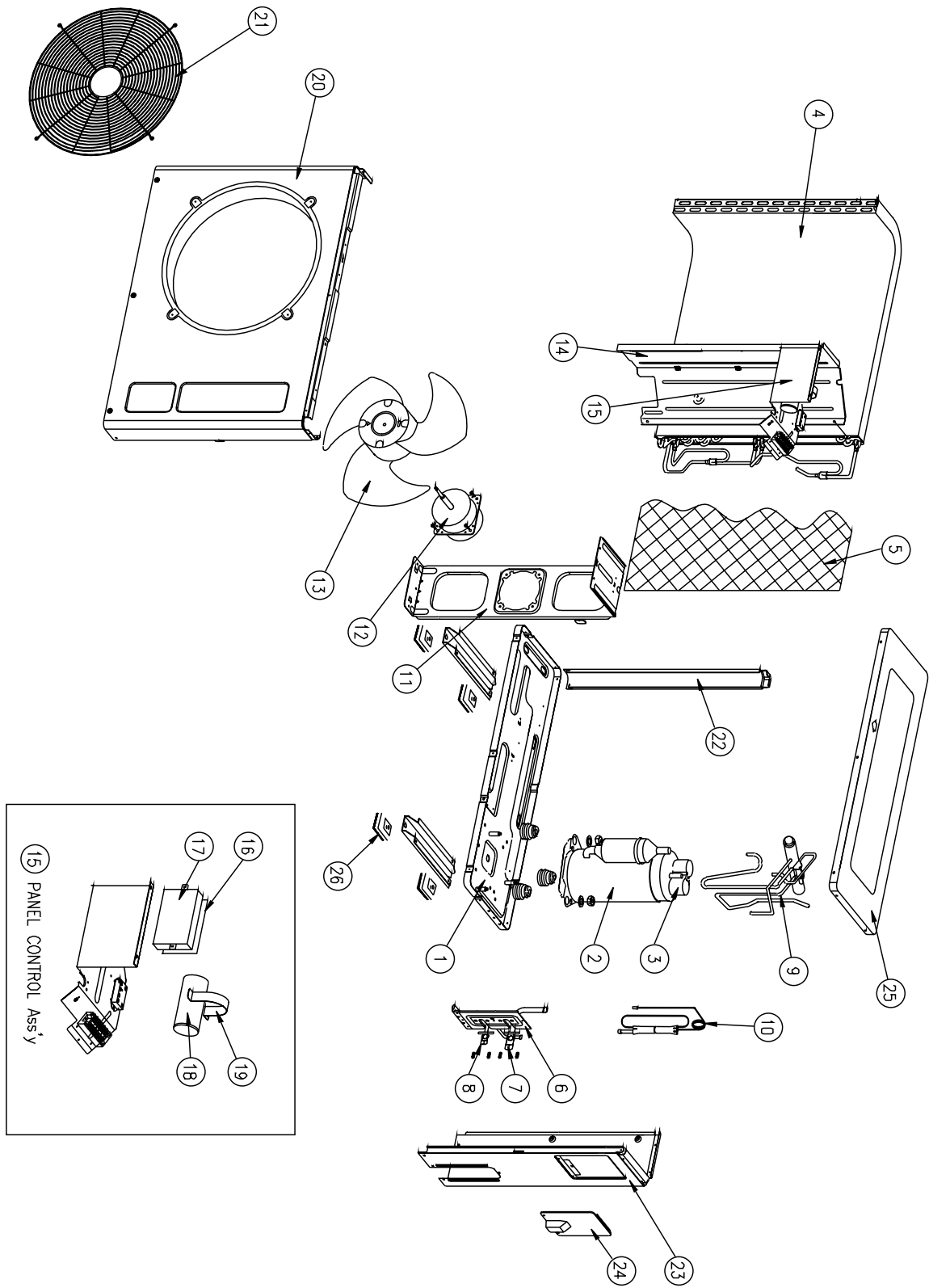


◆Outdoor Unit Part List (TAS-12,15,18HO)

✓ **Caution** : In this Manual, some parts can be changed for improving, their performance without notice in the parts list. So, if you need the latest parts information, please refer to PPL(Parts Price List) in Service Information Center (<http://svc.dwe.co.kr>).

No	PART CODE	PART NAME	Q'TY	SPEC	REMARK
1	311000750P	PAN BASE Ass'y	1	SECC T1.2 (GY-171D)	
2	3117146100	COMPRESSOR	1	QK173KAB (LG Rotary)	TAS-12HO
	3117146510		1	QJ222KCC (LG Rotary)	TAS-15HO
	3117143900		1	48D185IU1EH (SS Rotary)	TAS-18HO
3		COMP. OLP	1	MRA 98996-12026	TAS-12HO
			1	MRA 12074-12027	TAS-15HO
			1	MRA 12149-12007	TAS-18HO
4	311009H800	CONDENSER Ass'y	1	L568.4xH575xW25 (2Rx3C)	
5	3112400700	GRILLE COND.	1	PE	
6	310061000P	BRKT SERVICE Ass'y	1	SECC T1.6	
7	3105400200	SERVICE VALVE	1	C3771 1/4"	TAS-12,15,18HO
8	3115401900	SERVICE VALVE	1	C3771 3/8"	TAS-12HO
	3105400100		1	C3771,1/2"	TAS-15,18HO
9	311009HB00	PIPE REVERSING Ass'y	1	CHV-0104	TAS-12HO
	311009HC00		1	CHV-0201	TAS-15HO
	311009HD00		1	CHV-0201	TAS-18HO
10	311009HG00	PIPE CAPILLARY Ass'y	1	C:I.D.Ø1.6xL600 H:I.D.Ø1.6 x L400	TAS-12HO
	311009HF00		1	C:I.D.Ø1.8xL600 H:I.D.Ø1.8 x L300	TAS-15HO
	311009HH00		1	C:I.D.Ø2.0xL900 H:I.D.Ø2.0 x L500	TAS-18HO
11	3114500800	PLATE PARTITION	1	SGCC T1.0	
12	3110600200	BRACKET MOTOR	1	SGCC T1.2	
13	3118007160	MOTOR ODU	1	YDK-50-6A1	
14	3101800100	FAN PROPELLER	1	ABS+G/F(10),OD420,BLK	
15	3110025820	PANEL CONTROL Ass'y	1	SECC T0.8	
16	3114308910	ODU PCB Ass'y	1		
17	3111101600	ODU PCB CASE	1	P.P.+Talk 20%	
18	3109500810	CAPACITOR DUAL	1	3.0+25µF/400VAC	TAS-12HO
	3116903120		1	3.0+35µF/400VAC	TAS-15HO
	3116905300		1	3.0+40µF/450VAC	TAS-18HO
19	3101301100	CLAMP CAPACITOR	1	SECC T1.0	
20	311080021P	CABINET FRONT	1	SECC T0.8	
21	3112400300	GRILLE DISCHARGE	1	STEEL WIRE	
22	3112500300	GUIDE SUPPORT	1	SECC T1.2	
23	311080030P	CABINET SIDE	1	SECC T0.8	
24	3111408300	COVER SERVICE	1	SECC T0.8	
25	311420050P	PANEL TOP	1	SECC T0.8	
26	3102101000	CUSHION RUBBER	4	NR	

◆TAS-24HO



◆Outdoor Unit Part List (TAS-24HO)

✓ **Caution** : In this Manual, some parts can be changed for improving, their performance without notice in the parts list. So, if you need the latest parts information, please refer to PPL(Parts Price List) in Service Information Center (<http://svc.dwe.co.kr>).

No	PART CODE	PART NAME	Q'TY	SPEC	REMARK
1	3100041702	PAN BASE Ass'y	1	SECC T1.2 (GY-171D)	
2	3117141200	COMPRESSOR	1	QP325KBB (LG Rotary)	
3		COMP. OLP	1	INTERNAL	
4	3106800500	CONDENSER Ass'y	1		
5	3102402100	GRILLE COND.	1	PE	
6	3100041201	BRKT SERVICE Ass'y	1	SECC T1.6	
7	3105401300	SERVICE VALVE	1	C3771 5/8"	
8	3105401200	SERVICE VALVE	1	C3771 3/8"	
9	311009HE00	PIPE REVERSING Ass'y	1	CHV-0201	
10	310009HH00	PIPE CAPILLARY Ass'y	1	C:I.D.Ø2.0xL400 H:I.D.Ø2.0 x L500	
11	3105300400	SUPPORT MOTOR	1	SGCC-M-Z22 T1.6	
12	3118008000	MOTOR ODU	1	A2929GS010	
13	3101802001	FAN PROPELLER	1	ABS + G.F.20%	
14	3100031702	PLATE PARTITION Ass'y	1	SGCC-M-Z22 T0.8	
15	3100088680	PANEL CONTROL Ass'y	1	SECC T0.8	
16	3114308900	ODU PCB Ass'y	1		
17	3111101600	ODU PCB CASE	1	P.P.+Talk 20%	
18	3116904800	CAPACITOR DUAL	1	5.0+40µF/400VAC	
19	3101201100	CLAMP CAPACITOR	1	SECC T1.0	
20	3100801020	CABINET FRONT	1	SECC T0.8	
21	3102102000	GRILLE DISCHARGE	1	STEEL WIRE	
22	3100041100	GUIDE SUPPORT	1	SECC T1.6	
23	3100031520	CABINET SIDE	1	SECC T0.8	
24	3100089220	COVER SERVICE	1	SECC T0.8	
25	3100041500	PANEL TOP	1	SECC T0.8	
26	311500400	CUSHION RUBBER	4	NR	